

Hot Dots

Using Context Clues

READING COMPREHENSION CARDS

EI-2793

KRRR-LINK!

Includes
50 leveled,
sequential story
cards with
comprehension
questions for
grades 2-6!

Use self-checking
cards with or
without the Hot
Dots Power Pen™
(sold separately).

Educational
Insights®



SET 4

A Great Wall

In China there is a very long wall that has (1) _____ been built. It is the most famous wall in the world. It is like a long, thin line.

The Great Wall was built over many years. It was built by many people to keep the country safe.

The wall winds up and down. It runs through mountains and valleys. It follows the edge of deserts. It is made of (2) _____ bricks and stones.

Read the story. Choose the missing word.

- (1) ● A) there
● B) very
● C) alone
- (2) ● A) high
● B) walls
● C) part
- (3) ● A) along
● B) near
● C) from

- (4) ● A) let
● B) few
● C) so
- (5) ● A) fight
● B) near
● C) light



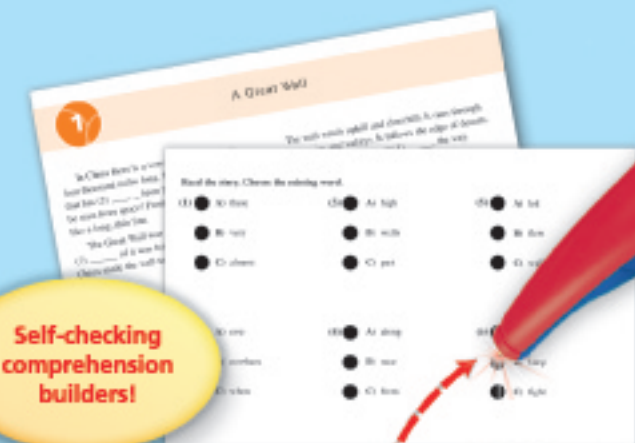
Reading Comprehension Cards Set 4: Using Context Clues

More Reading Comprehension Sets

- EI-2790 Getting the Main Idea
- EI-2791 Noting and Recalling Details
- EI-2792 Drawing Conclusions and Predicting Outcomes
- EI-2794 Finding the Sequence and Finding Cause and Effect
- EI-2795 Making Inferences
- EI-2752 Extra Hot Dots Power Pen

Look for Hot Dots phonics and math products, too!

This set is a collection of 50 stories containing 10 reading selections for each reading level (2.0 – 6.0). These fascinating Hot Dots-powered story cards help students use context clues to find meaning in each story. The stories include content and genres aligned to national and state reading standards.



Self-checking
comprehension
builders!

Touch the
Hot Dots Power Pen™
to a dot for instant
reinforcement!



1 Read the story on the front of the card.

2 Turn over the card. Choose the missing word in the story.

3 Touch a correct answer and the Hot Dots Power Pen responds with lights and one of many fun sounds. A gentle "wrong answer sound" with no lights accompanies an incorrect answer.

Educational
Insights®



0 86002 02793 1

© 2005 Educational Insights, Inc., Rancho Dominguez, CA 90220 (USA).
All rights reserved. Conforms to ASTM F 963.
Made in China. Please retain this information.

CUSTOMER SERVICE: (800) 905-4438 Monday-Friday
OR VISIT OUR WEBSITE: www.educationalinsights.com